

**1953 Coronation Omnibus  
Plate Numbers and Uses**

West Africa Study Circle

31 May 2025

Frederick Lutt

**De La Rue** printed issues of

Ascension, St Helena, and Tristan Da Chuna

Printed in sheets of 60 (6 per row, 10 columns)

Plate Number format: 1 1 or 1 4

**Bradbury Wilkinson** printed issues of

Gambia, Gold Coast, Nigeria, and Sierra Leone

Printed in sheets of 120 (two panes of 60) (10 per row, 6 columns)

Always distributed as panes of 60.

Plate Number format: 2 2, 2a 2a, etc



DLR imperforate proof pair  
of vignette in black on  
wove paper.



Imprint blocks

## DLR Plate Numbers

Left = name and duty Right = vignette

Typically 1 1 or 1 4

Sheets that went to the colony were numbered

St Helena: 4 digit number if over 999 sheets

Tristan: 2 digit number, up to 99 sheets

**Mystery: why no St Helena 1 1 ?**

Sheet margins: perforated at top,

Imperf at bottom, one perf left and right margins.

**Quantity sold:**

Ascension: 297,375 (4,956 sheets)

St Helena: 309,579 (5,160 sheets)

Tristan: 296,660 (4,944 sheets)





### Gambia: BW Plate Numbers

**Quantity sold: 429,240 (7,154 sheets)**

Left = name and duty Right = vignette

Number combinations: 1 3, 1a 3a, 1 4, 1a 4a

Sheets that went to the colony were numbered

Note 4 digit number so over 999 sheets

Sheet margins: perforated at top, imperf at bottom.

Right side margins perforated (left pane of 60)

Right side margins imperf (right pane of 60).



## Gold Coast: BW Plate Numbers

Quantity sold: 6,110,499 (101,841 sheets)

Left = name and duty Right = vignette

Number combinations: 1 3, 1a 3a, 1 4, 1a 4a

Sheets sent to colony were numbered

Note 6 digit number so over 99999 sheets

Inverted sheet number in lower left versus

typical upper right corner of sheet

Sheet margins: perforated at top, imperf at bottom.

Right side margins perforated (left pane of 60)

Right side margins imperf (right pane of 60).





### Nigeria: BW Plate Numbers

Quantity sold: 12,513,333 (208,555 sheets)

Left = name and duty Right = vignette

Number combinations:

1 1, (1a 1a, 1 2, 1a 2a missing from my collection)

2 1, 2a 1a, 2 2, 2a 2a

3 3, 3a 3a, 3 4, 3a 4a (Planned but not seen! Does it exist?)

Sheet margins: perforated at top, imperf at bottom.

Side margins perforated (left pane of 60)

Side margins imperf (right pane of 60).





**Sierra Leone: BW Plate Numbers**

Quantity sold: 1,167,405 (19,457 sheets)

Left = name and duty Right = vignette

Number combinations:

1 3, 1a 3a, 1 4, 1a 4a

Sheet margins: perforated at top, imperf at bottom

Side margins perforated (left pane of 60)

Side margins imperf (right pane of 60).



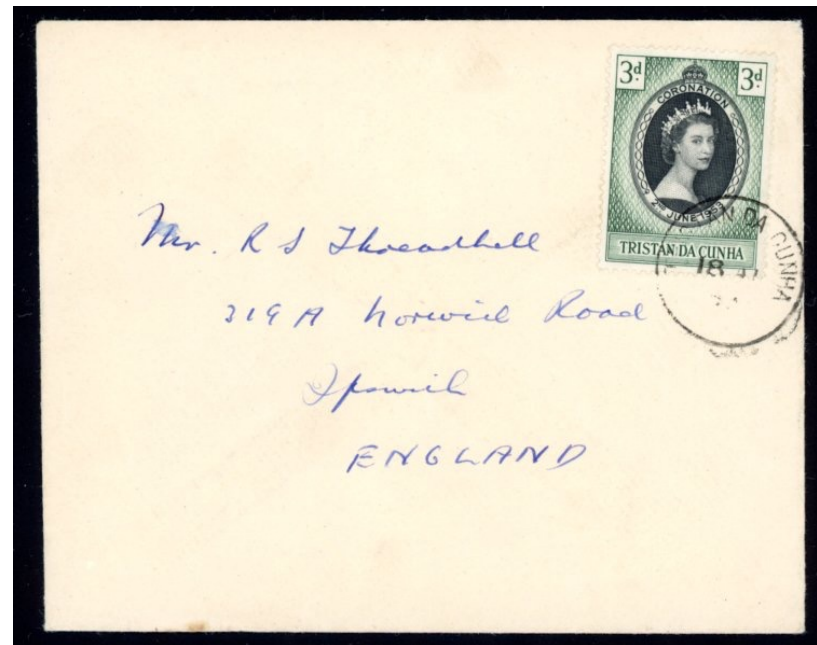
**Gambia:** tiny local FDC  
**Gold Coast:** Gambaga 21 Jan 1954 to Switzerland, rates: reg 3d, surface 4d  
**Gold Coast:** Accra local FDC with inverted sheet number





**Nigeria:** airmail PC to Germany,  
 Maiduguri 6 June 1953  
 Rate: airmail PC to Europe 7d

I have found almost no commercial uses  
 of this issue. A number should exist.  
 Do you have any?



**Tristan:** surface to England  
 18 Au 1953  
 Rate: surface to England 3d

